

PRESIDENT'S MESSAGE – Mimi Zwolak

Wow! What a change this year. COVID 19. It has changed our world. I hope you are all staying safe and well.

This issue is chock full of information. **Please** take time to look it over. That is my message to you this year. The MLA board cannot do this alone. We need help from you. Become informed and involved.

While we have several things threatening the health and enjoyment of our lake; invasive species, large ballast boats, water level issues and shoreline erosion among others, there are many different organizations doing a lot good things. Throughout this newsletter you will find links to these groups. Please visit these sites. Look for ways you might become involved. If you want the lake to remain enjoyable for all, we all must be involved.

I hope we will be gathering together again soon.

2020 MLA Board of Directors

President:

Mimi Zwolak

Vice President:

Tom Borke

Secretary:

Patti Grier

Treasurer:

Jerry Grimwood

Membership:

Karen Williamson

Directors:

Gary Gremel

Steve Wildes

Editor:

Mimi Zwolak

ANNUAL MEETING AND GUEST SPEAKER –

At our annual meeting on **Saturday, July 18^h, at 9am**, we will have a guest speaker, Nick Theisen. Nick will be talking about the Shoreland Stewards Program and the Michigan Natural Shoreline Partnership. There is more information on these programs later in this issue.

Nick is a Huron Pines AmeriCorps member serving at the Missaukee Conservation District this year. He graduated in May of 2019 from Michigan State University with a degree in Environmental Science and Management through Lyman Briggs College and a Minor in Science, Technology, Environment and Public Policy (STEPPs) offered through James Madison and Lyman Briggs Residential Colleges. Throughout his time at MSU, he was enrolled in classes that focused on water resources. Nick grew up downstate in Oakland County and has visited the Roscommon area every summer for the majority of his life. He is very interested in protecting our water resources and, as a result, was selected to serve at the Missaukee Conservation District. One of the many projects that Nick is involved with this year is the Shoreland Stewards Program,

<https://www.mishorelandstewards.org/>. This program is offered through the Michigan Natural Shoreline Partnership and it is designed to recognize property owners for their efforts in maintaining healthy shorelines and encourage property owners to use natural shoreline landscaping techniques. This program relies on the participation of both landowners and Lake Associations and Nick looks forward to working with people around the lake this summer!



WHAT IS MLA?

The Missaukee Lake Association, Inc. (MLA), formed in 1997, is a nonprofit voluntary dues organization incorporated under the laws of the State of Michigan. Membership comes from property owners and other interested parties surrounding the lake. The purpose of the MLA is to promote and protect the environmental integrity of the lake through education, safety and quality initiatives, and public awareness. The focus of MLA is on the global issues impacting the lake: water quality, wetland protection, weed control, environmental protection, and safety initiatives. Our objective is simple: to maintain and/or improve the overall water quality of Lake Missaukee.

FROM OUR MEMBERSHIP CO-ORDINATOR – Karen Williamson

Our membership numbers are down a bit this year. We have about 108 members. Please talk to your neighbors to let them know about our association. You can download a membership form from our website: <http://missaukeelake.org>
Suggested dues remain \$25 per year.



Benefits for a \$25 membership in MLA include:

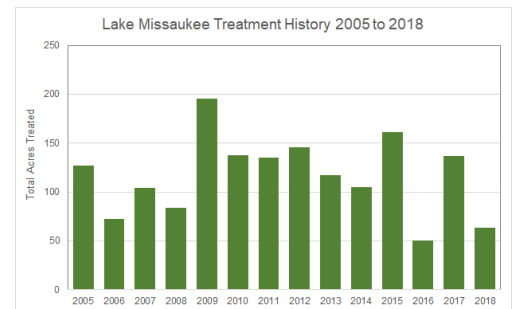
- An annual newsletter full of important articles!
- Access to our website: missaukeelake.org
- A Garage Sale by email program for members only
- Yearly subscription to Riparian Magazine, published by the Michigan Lakes and Streams Association
- Communication about local events and issues
- Education about ways to protect and enhance our beautiful lake

If you have questions send me an email at: missaukeelakeassoc@gmail.com.

If any of your contact information changes (email, phone, home address), please let me know. The lake association has gone digital, so our newsletters, membership dues reminders, and important dates will be sent to you by email.

LAKE MISSAUKEE IMPROVEMENT BOARD (LMIB) by Mimi Zwolak

Our association, MLA, is sometimes confused with the Lake Missaukee Improvement Board (LMIB). The LMIB was formed at the end of 2004 in order to create a Special Assessment District. This allows the LMIB to assess all lake users in order to treat the Eurasian Water-milfoil that had taken hold in the lake. After years of trying to get a lake association member on the board, I was selected to represent Lake Township and then selected to be the chairperson. At the board meeting in June 2019, our consultant, Tony Groves, from Progressive AE Water Resources, let us know there was a surplus in our account so the board elected to continue the program for an additional year without tax collection. We will be holding a Public Hearing to create a new 5 year plan on Saturday, August 15 at 9am at the Lake Township Hall.

**BOAT WASHES – by Mimi Zwolak**

I am looking into the possibility of the LMIB funding boat wash stations at Green Road and the County Park Lagoon launch. While I am not entirely convinced that boat washes are the ultimate answer to stop invasive species, I am beginning to think that if we expect boat owners to “Clean, Drain and Dry” their boats, we need to give them instructions and a place to do it. I am looking at a waterless system from CD3, <https://www.cd3systems.com/>. I am getting quotes to be able to discuss this in depth. This may not be the best solution and I am looking at other options as well. Perhaps just directions to the nearest car wash? Your thoughts are welcome and encouraged. Stay tuned.



**STOP AQUATIC
HITCHHIKERS!**
Be A Cautious Steward, Clean, Drain, Dry.



AQUATIC INVASIVE SPECIES - AIS

There are several articles in this newsletter talking about AIS. It is a huge problem for all our lakes. You can all help our lake by learning to identify AIS. If you would like to become more involved in this, please send me an email at mimizwolak@gmail.com. There are programs to teach you how to do this. Read the article about the partnership with the Conservation District.

MICHIGAN LAKES AND STREAMS ASSOCIATION

Michigan Lakes and Streams Association is a non-profit, state-wide organization dedicated to the preservation, protection and wise management of Michigan's vast treasure of inland lakes. The primary goal of MLSA is to assist lake associations as well as individual riparian property owners in water resource friendly techniques and methods of protecting their investment in waterfront property. MLA is a member, but you can also join as an individual to help support their mission. You can also subscribe to their monthly newsletter. There is a wealth of information on their website for lake front property owners. Check it out: www.mymlsa.org



THE MICHIGAN RIPARIAN MAGAZINE

As a member of the Missaukee Lake Association, you receive a subscription to the Michigan Riparian magazine put out by the Michigan Lakes and Streams Association. Be watching your mailbox for the fall issue, as **Lake Missaukee will be featured as the cover story in the fall or winter issue.** Long time MLA member, Ann Guidarini, is writing the article. The article will highlight the work of the MLA, the Lake Missaukee Improvement Board and the Lake Township Lake Enhancement Committee and what these groups are doing along with the City of Lake City and the surrounding Townships, to serve as stewards for the continued good health of our lake. If you have photos of the lake, of local wildlife, or of citizens helping to care for our waters, please send them to mimizwolak@gmail.com. Also, the article is still in draft form, so suggestions of topics to cover would also be welcome. Thank you for your help!



GARAGE SALE BY EMAIL

If you have something you'd like to sell, or a place to rent, please send an email with the following information to: missaukeelakeassoc@gmail.com

Your name

Email address and phone # if you want

Short description

1-2 pictures if you have them

Price

Members will contact you directly. – **MLA will not be involved in the exchange.**

Ideas include boats, furniture, tools, household goods, lake toys, rental properties (for overflow guests), etc.

Please let us know when you sell an item.

These notices will go out periodically when items are submitted.

*If you **DO NOT** want to receive the emails for the Garage Sale, just respond back and we will take you off the list. We will continue to send other info.*



MISSAUKEE COUNTY PARKS UPDATE

The County Park Boat Launch is scheduled to be repaved this spring. With the COVID 19 restrictions, it is on hold. The repaving project is going to re-grade the lot so that water will run off to the grass instead of straight down into the lake, and striping the lot will allow for more organized parking. The campground may not open as usual due to the restrictions.



LAKE TOWNSHIP'S LAKE ENHANCEMENT COMMITTEE – by John Beck, Chairman, beckj@sbcglobal.net

Our Lake Enhancement Committee, LEC, is designed to accomplish projects that are beneficial to all three lakes in Lake Township. With the changing nature of our world today it is necessary to find methods to manage lakes. Lake Missaukee is a living entity that requires our care and specialized management. All lake families have grown over the years, and because we all enjoy coming to the lake, there are issues we can no longer just take for granted. I believe we can all agree on four main themes.

1. Protecting the fish and wildlife.
2. Protecting the water quality and clarity.
3. Keeping the lake safe for swimming, boating, fishing and all other activities.
4. Maintaining the Up North country atmosphere.

LEC members regularly participate in state and regional conferences to learn and study the best management practices for our lakes.

Significant partnerships exist between the Lake Township Board, Lake Improvement Boards and the LEC. Committee members serve in leadership roles on several different committees. These are dedicated individuals who share the common goals associated with lake living.

Since the spring of 2019 Newsletter the LEC has been working on and accomplished several projects.

First, in July, the Lake Township Board added \$50,000 to the LEC. This will enable the group to continue its work. All spending requires the Township Board Approval. Stenciling of "Clean Drain and Dry" was added to boat ramps on Green Road and the County Park as a reminder that by doing those things it will help to reduce the spread



of aquatic invasive species. A MDNR study of over 150 Public Ramps found more than half had aquatic invasive plants. The two most common were Eurasian Water Milfoil and Starry Stonewort. The Lake Missaukee Improvement Board continues to work to control the Milfoil.

We are currently working with the Missaukee Conservation District (explained in another article), the County Road and Drain Commissioner, and Lake City Schools for a Lake Missaukee Clean up and a program for school science.

The committee facilitated walleye stocking in early October of 2019 in Crooked and Sapphire Lakes.

This spring, the Township acquired a Rescue Boat that will aid in winter situations. The Township has asked that the LEC assist in outfitting it with the necessary special equipment required for that purpose.

We are currently working a project that will document the condition of the shorelines this spring and summer. Our goal is to create a picture profile using a drone video. These pictures would illustrate the environmental features and document the human impact on the lakes in 2020.

We are currently working with the Lake Township Board toward adopting several Lake Friendly Township Ordinances that would add protection to the lake environment.

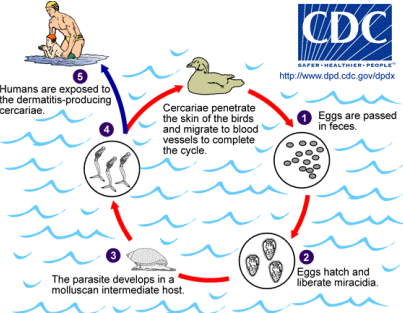
As always, we welcome suggestions for innovative lake projects. If you have an idea, please bring it to our attention.

LEC members for Lake Missaukee are Larry Collins, Jerry Grimwood, Chad More and Mimi Zwolak.

John M. Beck becklj@sbcglobal.net

SWIMMER'S ITCH – Mimi Zwolak

The Tip of the Mitt Watershed Council is acting as project manager for the Swimmer's Itch Partnership. This is a partnership of lake associations that was formed in 2014. I hosted two young biologists from the Tom Raffel lab from Oakland University this summer for a week. They were doing sampling from



several lakes in our area. It was interesting to learn about their research. My husband, a biology major, had a great time looking through the microscopes! I attended a conference in November put on by the Michigan Swimmer's Itch Partnership where the groups presented their initial results. If you are interested, you can see the presentation and other research at: <https://www.misip.org/>



WHAT RESPONSIBLE WAKEBOAT OPERATORS CAN DO TO HELP MINIMIZE DAMAGE TO INLAND LAKE ECOSYSTEMS AND SHORELINE PROPERTY WHILE WAKE SURFING

Wake surfing creates larger waves than any other activity on the lake, including storms. Please be aware of the guidelines.

1. Restrict the operation of their boats to large inland lakes.
2. Always operate a minimum of **150 yards from shore**.
3. Adjust the displacement, and wave amplitude of their boats based on the size of the lake they are operating on.
4. Restrict the operation of their craft to waters of a **minimum depth of 20 feet**.
5. Always use sound judgment, and be mindful of the fact that improper operation of their boats can cause damage to docks, hoists, moored boats, and other shoreline infrastructure as well as destroy fish spawning areas and other ecologically sensitive habitat.

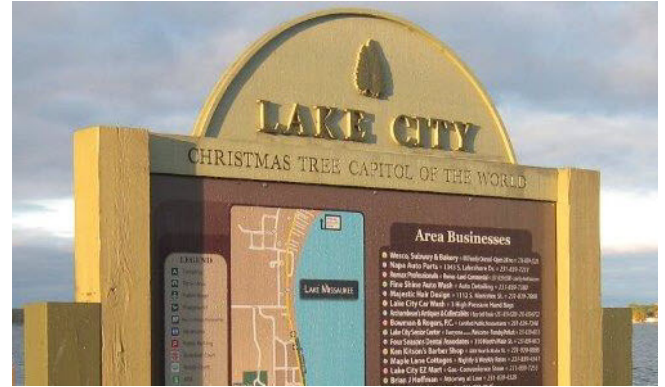
<https://www.wakeresponsibly.com/>

<https://www.wsia.net/the-wwa-promotes-wake-responsibly/>

GROWING THE AREA OF LAKE CITY – 2020 UPDATE by Craig J. Ardis

This is the third informational article regarding the partnership between the City of Lake City with Lake and Forest Township. Its purpose is encourage investment and economic growth through a statewide assistance program called the Redevelopment Ready Community (RRC) program, an assistance initiative offered by the Michigan Economic Development Corporation (MEDC) a public-private, non-profit organization.

There are a number of requirements to accomplish in order to become RRC certified. The major requirement is developing a Community Master Plan. That Master Plan has been developed by the Economic Committee with consultation from Becket & Reader. The Master Plan is currently in the process of being reviewed by the State and Local government bodies. This is about a sixty-three day process. These bodies will share any comments they glean from their review process and the Economic Committee will respond to these comments. Soon after, the Master Plan will be officially adapted. Once this is done, we will then begin driving future Economic Development initiatives. In the meantime, we continue to work with MEDC on the requirements to complete the RRC. Like everything else we are being hampered by the Covid-19 pandemic so most activities have come to a halt. We will begin working on these initiatives as soon as we are able.



As all the above has been moving along, we have been working on a number of other initiatives that tie into the Master Plan. One of those initiatives has been the development of bike paths from Missaukee County over to the Wexford Pathways system. We are fortunate to have help from Wolverine Power to help us move this along. We have connected with a couple of state bike organizations who want to work with us on this initiative which could open the door to not just the Wexford Pathways but connect us to Tart Trails along with other state trails. We are in the early stages of this initiative. This is very exciting.

Roger's Grocery store in Lake City continues its renovation and is now targeting to open in mid-May. Roger's is very excited to become a major part of our community.

The Medical Clinic slated to be built on the corner of Park and M-66 has had some delays because of design, completion of financing, construction lag, etc. There soon should be some update communication once the country gets back to being open for business. Both these initiatives came out of our Master Plan and they have been developing even before we have the official plan completed. This shows we are continuing to progress and work around issues that slow us down.

There are two or three new businesses that are planning to open on Main Street in Lake City soon. They are in different phases of development. All these businesses fit into our proposed Master Plan nicely. You may have seen some communication in the Sentinel. Watch for future communication!

All the things we talked about in this article have been impacted by COVID-19 which has slowed or stopped us moving things forward. As our country begins to open we will begin moving many of these initiatives forward again. We are still very excited for the progress we have made and what we see for the future of our Missaukee County community.

Missaukee Conservation District Partners with Lake Township!

Community Partnerships Leading to Healthy Lakes

By: Michelle Hill, Missaukee Conservation District Program Coordinator

Editor's note: This is a project the Lake Enhancement Committee has been working on for several years. Kudos to John Beck, chairman, for getting this going! Please take time to read this.

Missaukee Conservation District (MCD) is excited to be partnering with Lake Township in 2020 and beyond! This is a partnership a long time in the making and we have now come together and created a plan that will benefit the health of our lakes as well as the spirit in this great community. From providing education to Lake City students and citizen science opportunities to lakeshore owners, this partnership will involve every one of all ages.



Lake Days at Lake City Middle School



In the fall of 2020, MCD, with financial backing from Lake Township, will be holding Lake Days for Lake City Middle School students. This will involve pre and post lessons in school AND time at Lake Missaukee rotating between some cool activities such as sampling from a pontoon for things like turbidity, pH, dissolved oxygen, and rake sampling for aquatic plants. There will be an aquatic plant pressing and identification station and a macro invertebrate identification station. Students will also take part in additional activities/games related to aquatic ecology and a boat washing demonstration. The pre and post lessons will take place at the school led by our Environmental Education Coordinator, Andrea Mayer. She will introduce aquatic invasive species through an interactive lesson. We'd also like students to learn boating safety from Missaukee County Sheriff's Department. Post lessons will wrap up plant identification and summarize the entire experience. It will be an exciting experience and will reach upwards of 100 students.

Project WET Workshop for Lake City K-8 Teachers

Kudos also goes out to Lake Township for funding a Project WET (Water Education for Teachers) workshop in February of 2020 for Lake City teachers. Project WET's mission is to reach children, parents, teachers and community members of the world with water education that promotes awareness of water and empowers community action to solve complex water issues. Eight K-8 teachers were provided a half-day training by Project WET facilitators and left with an awesome curriculum to use in their classrooms.

Citizen Science Opportunities/Aquatic Exotic Plant Watch

In addition to some testing that is currently being done on some of your lakes, this summer shoreland owners can become involved in the Exotic Aquatic Plant Watch (EAPW). The EAPW is part of the Cooperative Lakes Monitoring Program (CLMP) which unfortunately hasn't been funded for the 2020 season; BUT MSU Extension and the Huron River Watershed Council have offered to support two parameters of the program for the 2020 season. The Secchi Disk Transparency and the EAPW are available to lakeshore owners free of charge this season. This is an excellent opportunity to enroll in the program at no cost and learn more about your lake ecology and discover what is in your lake. Volunteer groups are being formed on Lake Missaukee, Crooked Lake, and Sapphire Lake with the help of Nick Theisen, AmeriCorps Member with the MCD and Michelle Hill, MCD's Program Coordinator. Each lake will receive a free aquatic sampling tool kit provided by the North Country Cooperative Invasive Species Area and made by students at the Wexford-Missaukee ISD Career Tech Center. Each kit contains a Secchi Disk for determining turbidity levels in the lake, a sampling rake for gathering aquatic plants and a sampling tray to help with identification of plants. The purpose of the EAPW is to sample lake vegetation and be on the lookout for the top five aquatic invasive species that can

wreak havoc on the lakes if allowed to take over. Volunteers learn how to detect, monitor, and respond to invasive aquatic plants. Early detection and a quick response is critical to preventing damaging invasions. If you are interested in volunteering with us, contact Nick (nicolas.theisen@macd.org) or Michelle (michelle.hill@macd.org) for information.



Shorelands Stewards Program,

<https://www.mishorelandstewards.org/> ---- <https://www.mishorelinepartnership.org/>

The Michigan Natural Shoreline Partnership is focused on conserving Michigan inland lakes by recognizing lakefront property owners who maintain their properties with lake-friendly practices, it encourages property owners to use natural shoreline landscaping techniques and provides educational resources to help property owners manage their property for a healthy lake. A Shoreland Stewards Program Workshop is being held at 1 pm July 10 at Lake Township Hall. Julia Kirkwood, Michigan Department of Environment, Great Lakes and Energy, EAGLE, will provide the presentation and answer any questions about the program. Email Nick Theisen at nicolas.theisen@macd.org to RSVP or to ask any questions.

MISSAUKEE CONSERVATION DISTRICT – www.missaukeecd.org

Because of COVID 19 the recycling center is closed and any other programs may be affected. Visit the website for up to date info.

HOUSEHOLD HAZARDOUS WASTE COLLECTION

Saturday June 6, 9 am-1 pm, Missaukee County Road Commission, 1199 N. Morey Road (M-66), Lake City. Household hazardous waste, on-site shredding, mattresses, tires, and more. Call Missaukee CD for additional information or visit. Missaukee County landowners only.

MISSAUKEE COUNTY RECYCLING CENTER 6420 W. Sanborn Road.

Recycling Center Hours when operations are resumed: Saturday – 9am – 1pm, and Wednesday – 9am – 3pm
Check the website for more information.



MLA HAS GONE PAPERLESS

You are receiving this newsletter digitally this year. When possible, we will print several copies and put them at the Chamber of Commerce office. You are welcome to pick up a copy there.

LOCAL WEB SITES

Missaukee Lake Association – missaukeelake.org
Lake City Chamber of Commerce – www.lakecitymich.com
Lake Township – www.laketownshipmissaukee.com
The City of Lake City – www.cityoflakecity.com
Missaukee Sentinel – www.missaukeesentinel.com
Missaukee County - <http://www.missaukee.org>
Missaukee Conservation District – missaukeecd.org
Muskegon River Watershed Assembly - <https://mrwa.org>