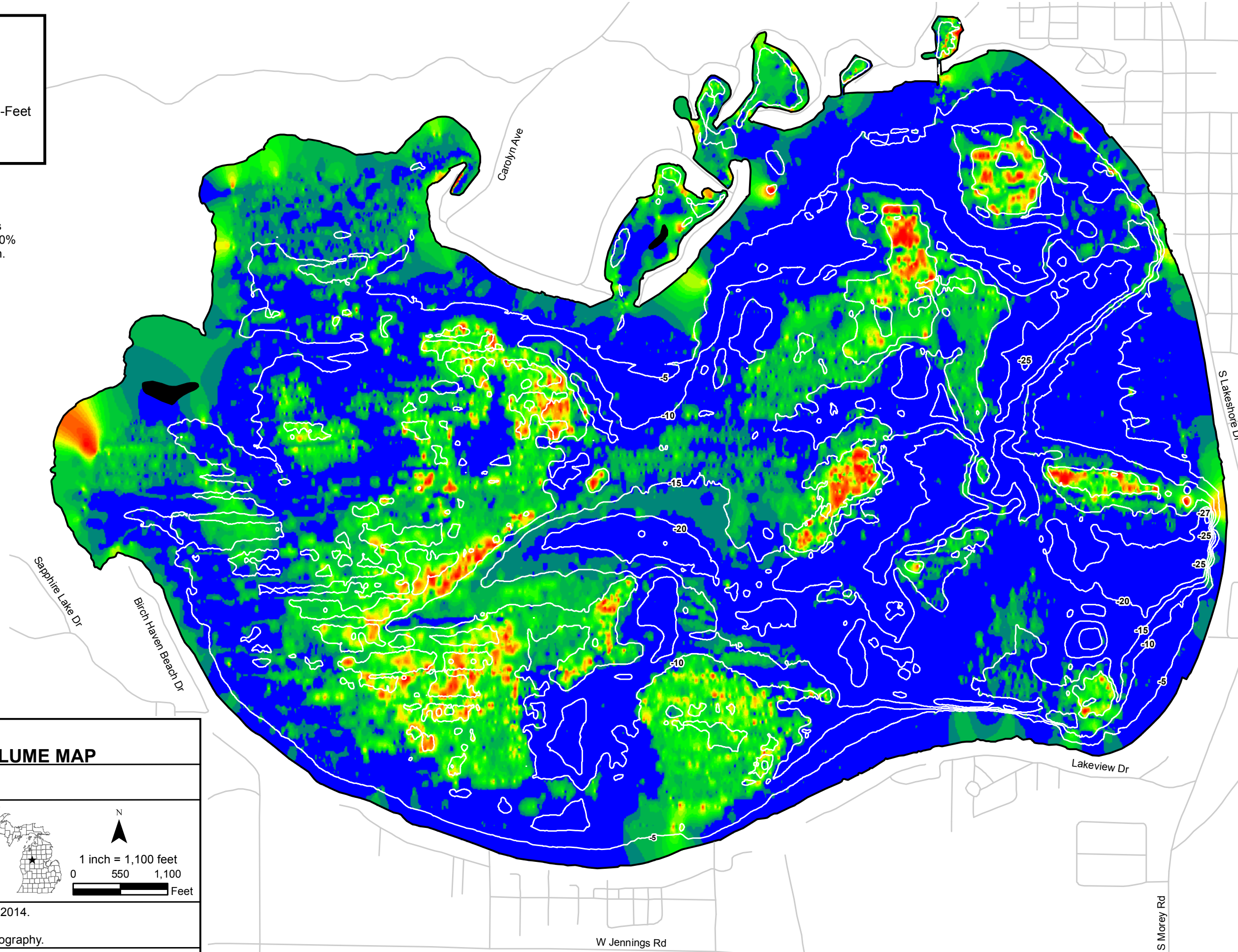
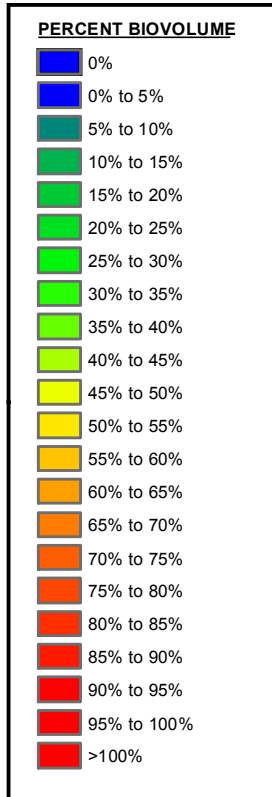


**PHYSICAL CHARACTERISTICS**

Lake Surface Area	2,079 Acres
Maxium Depth	27 Feet
Mean Depth	8.8 Feet
Lake Volume	18,214 Acre-Feet
Shoreline Length	11.3 Miles
Shoreline Development Factor	1.8

Note: Biovolume is a measure of the height of plants in the water column. A biovolume measurement of 50% indicates plants occupy one-half of the water column.

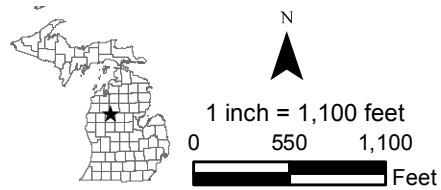


**LAKE MISSAUKEE  
AQUATIC VEGETATION BIOVOLUME MAP**

MISSAUKEE COUNTY  
T.22-23N, R.7-8W

**LEGEND**

Contour Intervals: 5 Feet  
 —20— 5' Major Contours



Note: Hydro-acoustic depth measurements made in 2014.  
 Bathymetric data processed by Navico.  
 Shoreline digitized from 2011 aerial orthodigital photography.

October 2014

progressive|ae